



STET Polaris

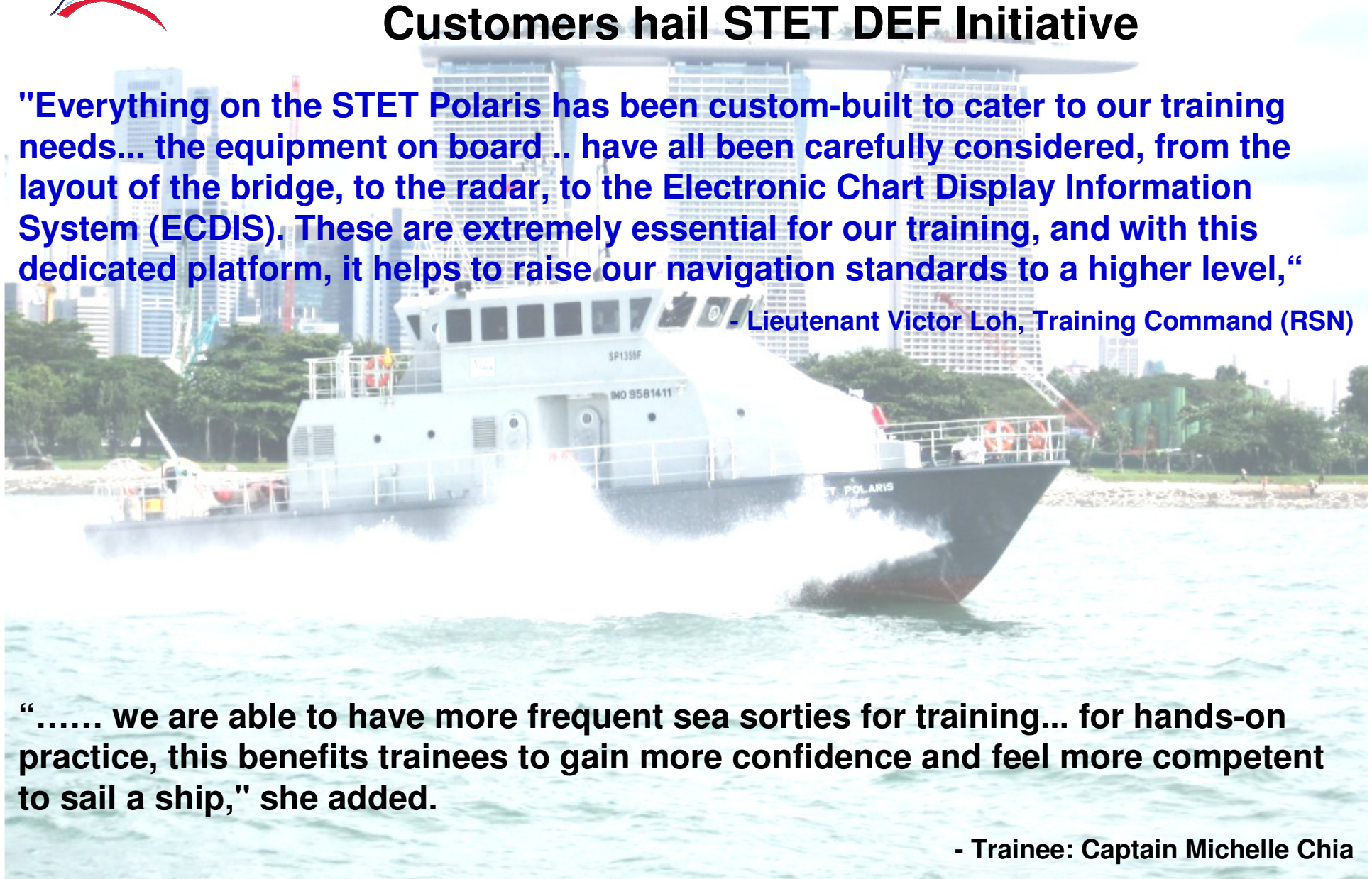
Customers hail STET DEF Initiative

"Everything on the STET Polaris has been custom-built to cater to our training needs... the equipment on board .. have all been carefully considered, from the layout of the bridge, to the radar, to the Electronic Chart Display Information System (ECDIS). These are extremely essential for our training, and with this dedicated platform, it helps to raise our navigation standards to a higher level,"

- Lieutenant Victor Loh, Training Command (RSN)

"..... we are able to have more frequent sea sorties for training... for hands-on practice, this benefits trainees to gain more confidence and feel more competent to sail a ship," she added.

- Trainee: Captain Michelle Chia





STET Polaris

More Kudos from Customers

"Whenever trainees train using our warships, it typically requires about 30 RSN personnel to sail the ship in support of the training task. With a commercial ship now, it only requires about four crew to man the ship, so there's a lot of manpower savings."

- LTC Neo Meng Keong, Commanding Officer, Navigation School - RSN

"The shallow draught .. enables us to explore new training areas - narrow channels. It provides a seamless transition from classroom knowledge to gaining skills and experience during practical sea sorties."

- Trainee: Captain Neo Wei Siong

